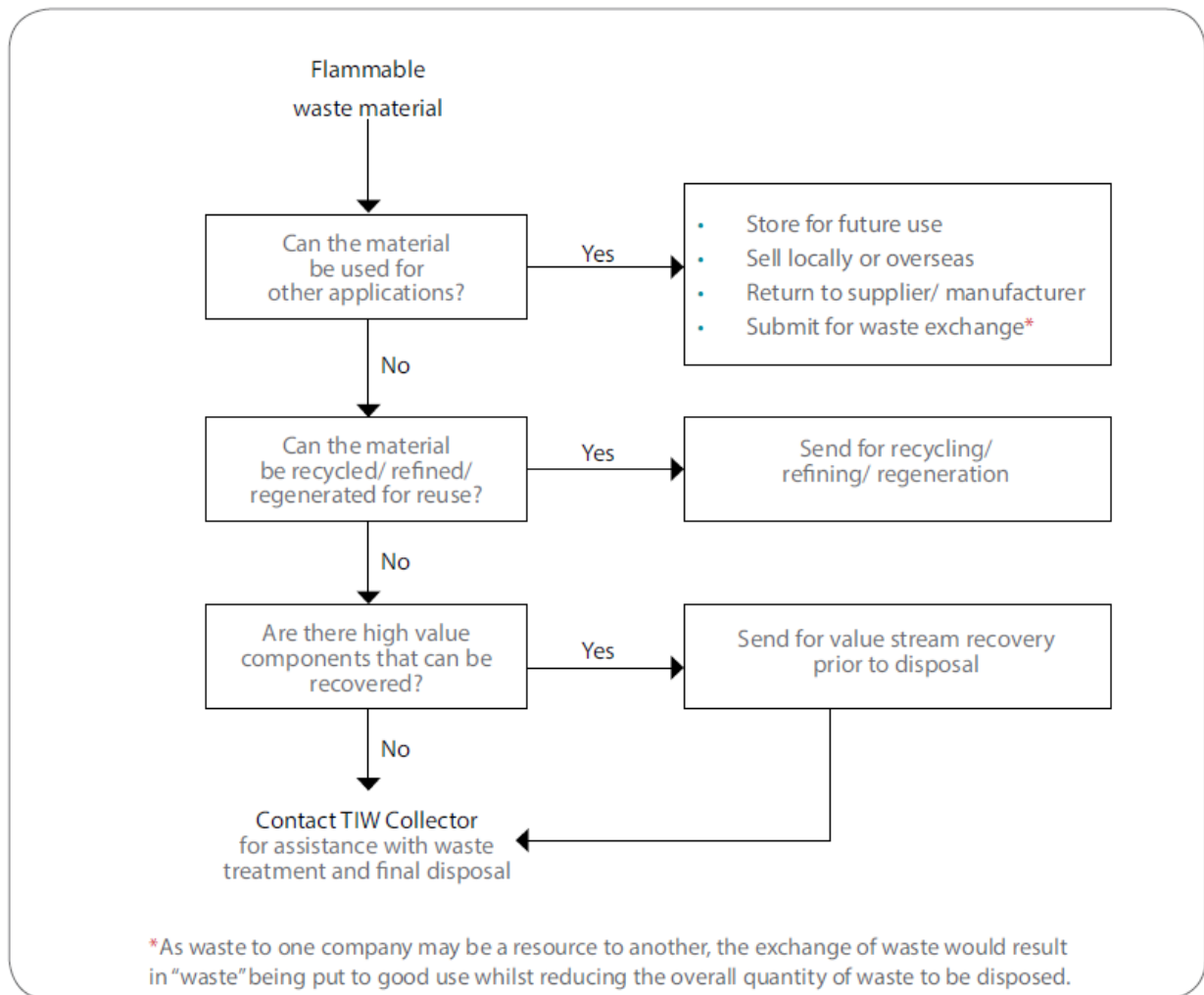


Please refer to the following flowchart regarding the disposal of flammable waste material:



**Decision flowchart for flammable waste disposal ([WSH Guidelines on Flammable Materials](#) page 58)**

For disposal of bulky and/or industry-use flammable materials, companies should contact the supplier of the cylinders to arrange for the collection of the used/empty cylinders. Alternatively, companies may contact M/s ECO Special Waste Management Pte Ltd to assist with the disposal. For further information related to the safe handling and disposal of industry-use flammable materials, companies may refer to the [guidelines](#).

For household generated waste such as an empty propane canister, members of the public are advised to fully consume the flammable products first before placing them in the blue recycling bins. For the disposal of used liquefied petroleum gas (LPG) cylinders, refer to the advisory on the use of LPG [here](#).